



ZULUDeSK

Mobile Device Management
for Education

Creativity,
Security,
Flexibility

Why ZuluDesk?



Teacher

Contemporary learning
and teaching in the
digital classroom.



IT Admin

ZuluDesk is simple,
straightforward and
easy to manage.



Parents

ZuluDesk provides
parents with device
management.



Price

30 day Free Trial.
Only AUD\$9.90*
per year.



On the Same Page: Mobile Device Management

Mobile Device Management (MDM) is the umbrella term for a software solution for the configuration and centralised management of mobile devices such as computers, tablets and smartphones. A large number of devices requires a simple and straightforward management solution, particularly in a school environment.

All devices are conveniently wirelessly managed - no matter where the device is located. Through a central server, a secure connection to the devices is established via the Internet and the devices are managed by means of an interface.

MDM solutions provide teachers and IT administrators with a convenient tool to administer devices for individual students, school classes, or even multiple institutions. For teachers, it ensures control over all devices when delivering digital lessons.



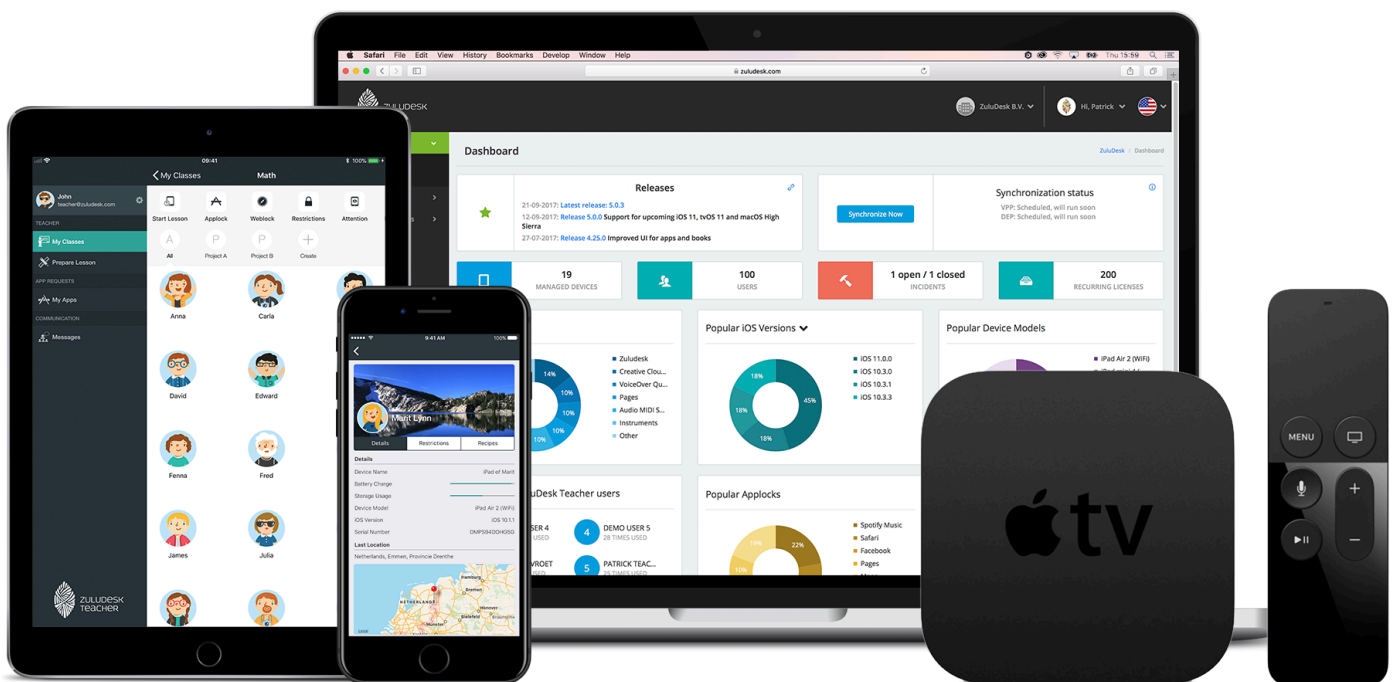
Why ZuluDesk: Advantages at a glance

ZuluDesk is a powerful and affordable MDM for the modern, digital classroom.

The system was originally developed in 2013 in a school in the Netherlands. Now educational institutions in more than 50 countries rely on ZuluDesk. In Australia and New Zealand more the 1200 primary and secondary schools are already experiencing the ZuluDesk advantage.

The system allows easy management of all Apple devices. It provides simple tools for IT departments, teachers and parents.

In conjunction with Apple's new iOS 11, ZuluDesk is the best MDM choice for educational purposes. The inventory, deployment, and security of every Mac, iPad, Apple TV, and iPhone in any school is easily managed and the system integrates with existing IT solutions with an ease never before possible.





Ease of use

ZuluDesk has a clearly laid out interface. Mastering app, profile and document deployment is expedited with a consolidated menu system. No wading through layers of submenus. Installation and configuration is conducted by ZuluDesk partners across Australia and New Zealand. This can be done onsite at your school or remotely.



Integration of Apple Services

Existing Apple services, such as Apple School Manager (ASM), the Volume Purchase Program (VPP) or the Device Enrolment Program (DEP) can be conveniently accessed through ZuluDesk.



Control in the classroom

Less distraction, better learning. ZuluDesk allows complete control of all devices in the classroom, with the ability to block apps, web pages and features, such as spell check.



Cost effective for education

The price structure of ZuluDesk is simple and transparent. Each individual device costs only AUD\$9.90 per year. On request, there is also a Lifetime license* for AUD\$39.60. Updates are included.

*Bound to the serial number of an iPad/Mac.



Data protection and hosting in Germany

Security is at the heart of ZuluDesk. The entire cloud structure is therefore hosted on servers in Hetzner, Germany, and abides by the strict German privacy policy.



Unique apps for teachers and parents

ZuluDesk offers innovative apps with a variety of helpful features designed specifically for teachers and parents. The use of these apps is free under the ZuluDesk licenses.



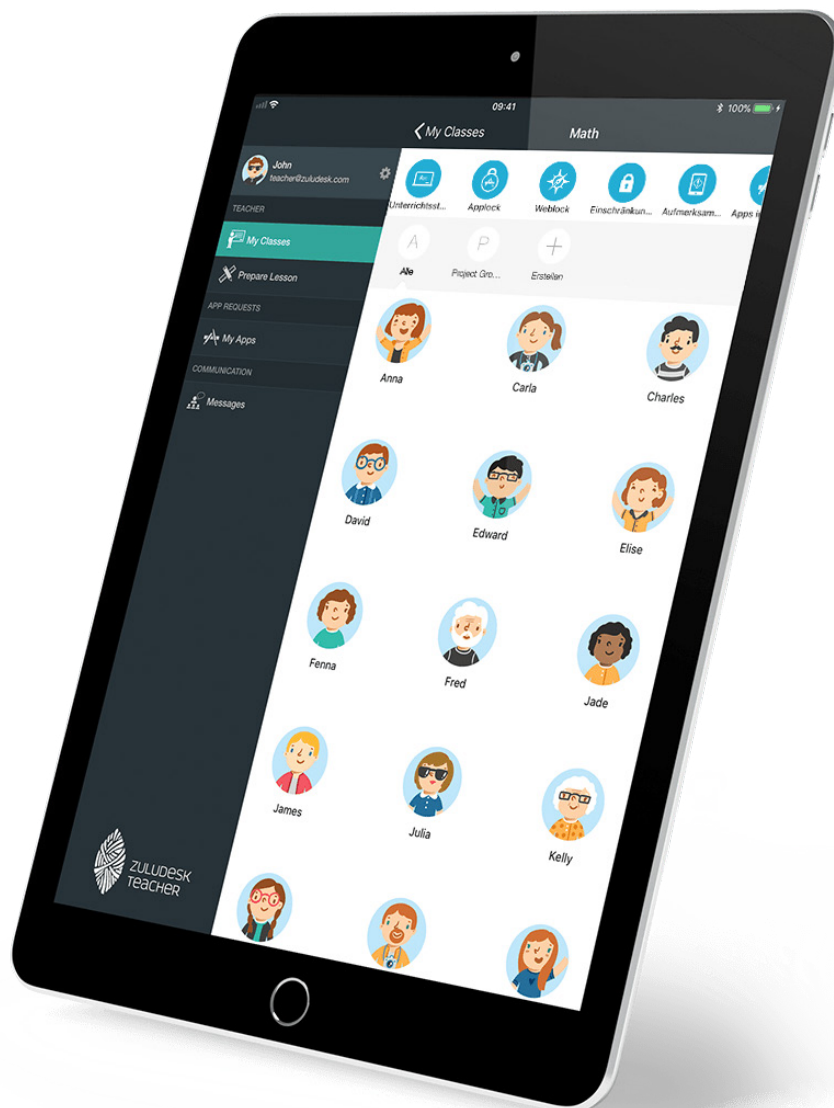
Find further information about data protection at:

<https://support.zuludesk.com/hc/en-us/articles/115002300733-What-about-privacy>

For Teachers: ZuluDesk Revolutionises Teaching

The ZuluDesk Teacher app is designed to meet the needs of school teachers. The app makes it possible to quickly and easily control and manage Apple devices.

ZuluDesk Teacher complements Apple's own Classroom app - so the advantages of both systems can be conveniently used together.





Prepare lessons

The Prepare Lessons feature makes it easy to prepare lesson profiles containing apps and web pages provided to students during class.



Control access

Prevent the access and use of selected device functions. The teacher effectively controls notifications, camera functions or the use of web pages, hence limiting student distraction.



Temporarily restrict app usage

Only apps on the allowed list will be available to students on their iPads. All other apps and associated notifications are temporarily hidden.



The attention screen

To get the undivided attention of the students, ZuluDesk provides the Attention Screen feature. By pressing a button, it is possible to lock the students' iPads and display a message if required.



Time-based security

Time-based and permanent restrictions allow the use of iPads in exams.



Write messages

The ZuluDesk Teacher app keeps students up to date. This feature allows teachers to communicate with individual students or groups.



Device information

General information can be provided on request for each selected student device. For example, the battery level of a device can be easily determined.



Easy use of shared iPads

With a simple QR code scan, iPads can be assigned profiles. Thus, individual devices can be conveniently assigned to different users. The students know which device to use, as their picture can be seen on the screen. After signing in, they will find their homework, apps and assignments exactly as they left them.



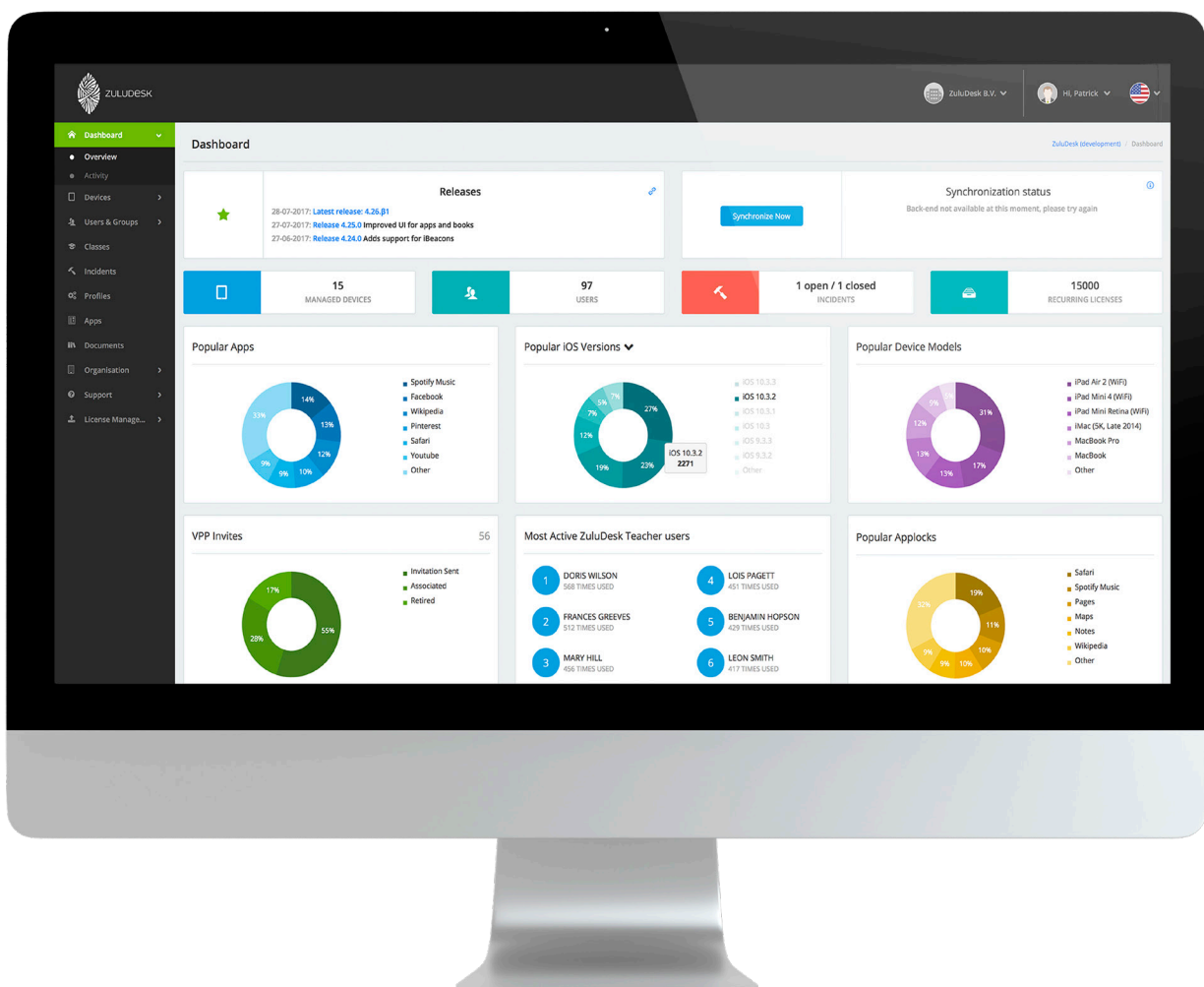
Online teacher app

As an alternative to the iOS Teacher app, the ZuluDesk interface is also available online via a web browser. Lessons can also be easily prepared off-site without an iPad.

For IT Admin: A scaleable and intuitive solution

The growing number of mobile devices in schools requires scalable and intuitive IT admin solutions.

ZuluDesk offers a powerful management system that allows you to manage an unlimited number of devices. Whether a single school or a school network: ZuluDesk is the perfect solution.





ZuluDesk Dashboard in iOS and macOS

The dashboard offers a comprehensive, convenient quick overview. It's easy to keep track of all managed devices, users, popular apps, and more.



Device and user management

Users, user groups and device groups are easily created and managed. It is also possible to view in-depth information and perform diagnostics on individual devices.



Active profile management

ZuluDesk supports various profiles for students, teachers and other employees. Layouts for devices, restrictions, and more can be created.



Class management

Classes can be easily managed by dragging and dropping the required apps and content and creating restrictions. Teachers can request apps from ZuluDesk, which are then shared with IT admin.



The ZuluDesk Incident System

This powerful tool helps the IT department manage issues with devices. Register damaged iPads and upload photos or additional documents to assist with warranty or insurance claims.



iBeacon profile assignment

This feature enables automatic assignment of profiles using iBeacon technology. For example, upon entering the chemistry room, suitable apps and educational materials are automatically displayed, whilst other content is hidden.



Free updates

All updates and newly released apps are included as part of ZuluDesk license usage.



AirPrint printer management

AirPrint technology enables documents to be printed without installing printer drivers. ZuluDesk seamlessly supports this technology.

For Parents: Be active and aware

ZuluDesk is used by teachers in schools worldwide to control Apple devices. Better learning through less distraction.

With ZuluDesk Parent, parents can participate in their children's school life and easily control their children's devices.

To use the ZuluDesk Parent app, the school must have a ZuluDesk license and allow parental access.





Modify access to games

ZuluDesk offers parents time-based and access control to games and non-essential apps on their children's iPads.



Restrict communication

With simple settings, the use of programs such as iMessage, WhatsApp and Messenger is safer and more controlled.



Control Social Media

ZuluDesk Parent allows parents to set rules that limit the use of social media such as Instagram, Facebook, or Twitter to specific times during the day.



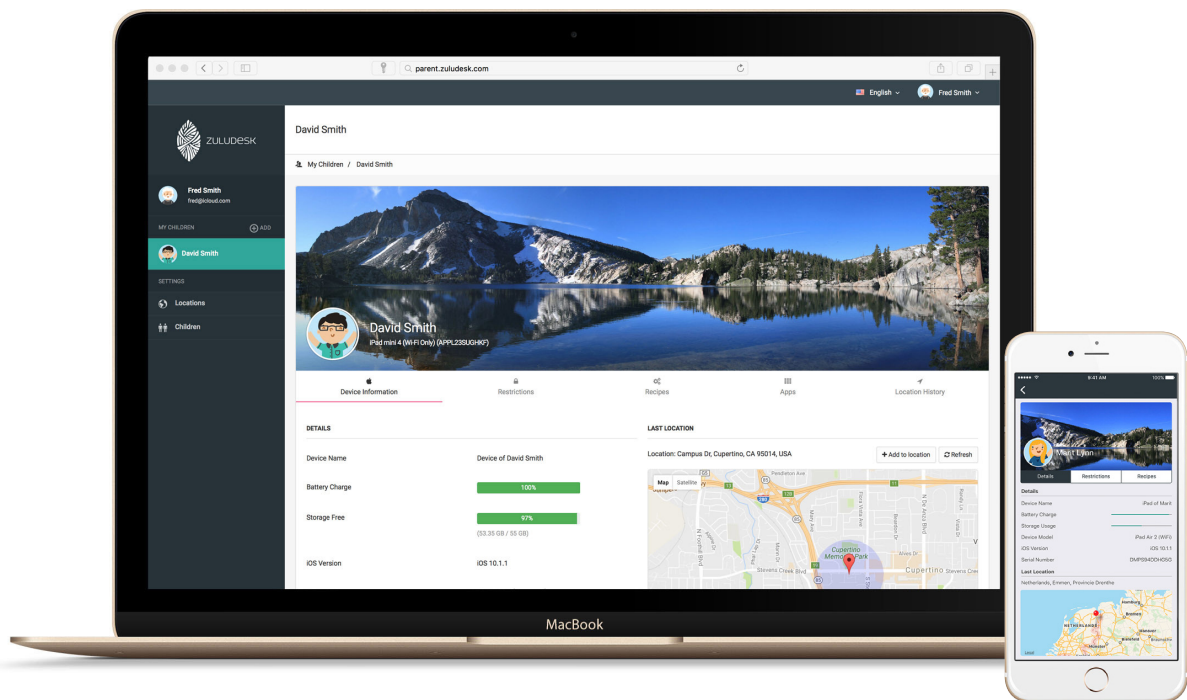
Location notifications

The app informs parents about their child's arrival at school and when they return home.



Safety feature

ZuluDesk Parent includes a motion sensing feature whereby notifications will be automatically turned off. For instance, whenever their child is cycling or walking, thereby reducing distraction and assisting road safety.

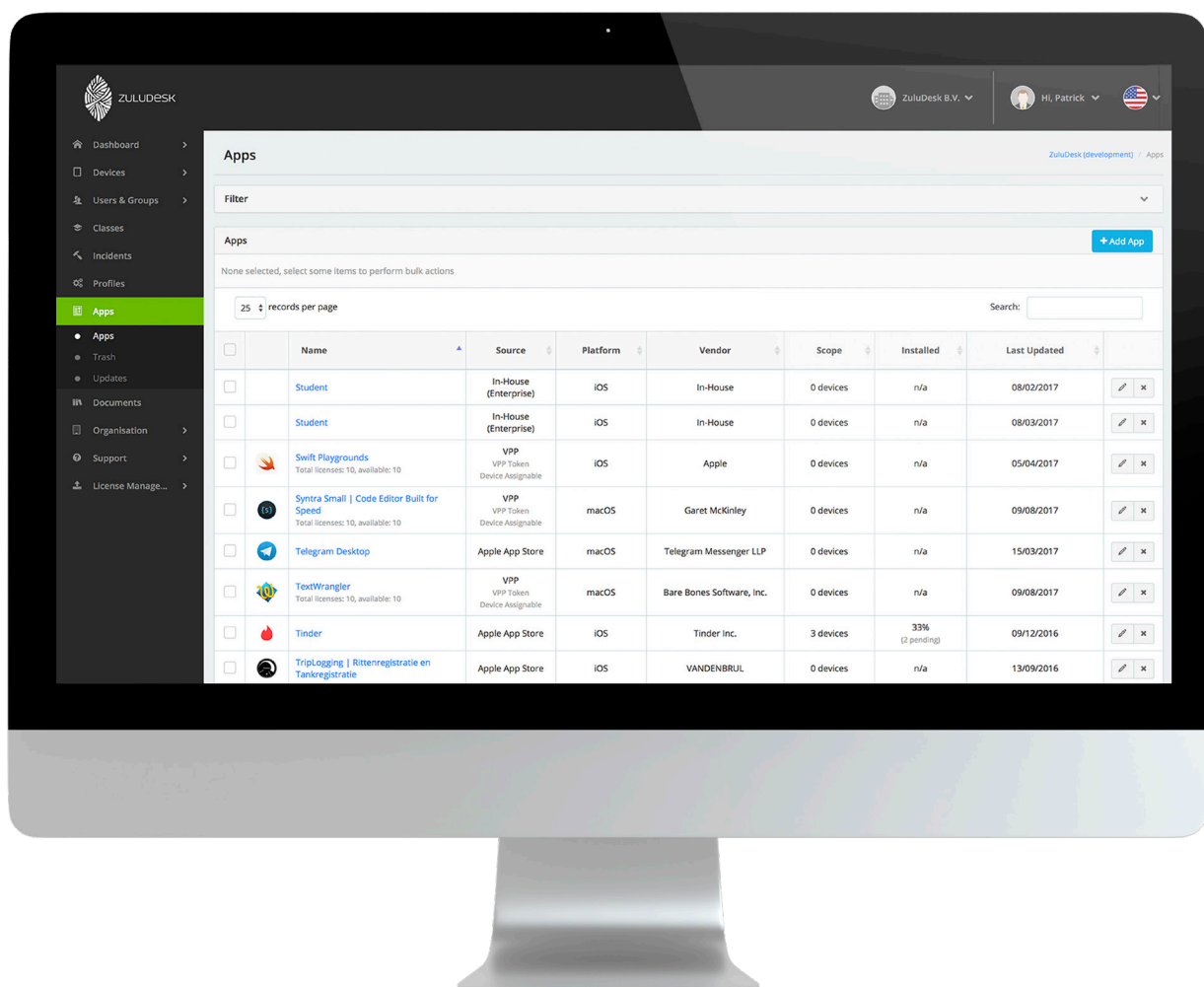


Compatibility: ZuluDesk and Apple services

Apple services significantly simplify the MDM setup process. They enable devices to be registered quickly, configured automatically, and apps purchased and distributed directly.

ZuluDesk is the ideal management system and is seamlessly compatible with all Apple services.

It has never been easier to provide iPads and Macs for students and teachers.





Apple School Manager (ASM): Manage Apple IDs and Apps

Apple School Manager is a simple, web-based portal that can be used to assign iPads and Macs in schools to an MDM. It enables the creation and management of Apple IDs for all students and employees and makes it easy to purchase books and study materials.

ZuluDesk integration with ASM makes it easy to sync classes, students and teachers. iPads can be set up wirelessly. The setup and registration with the appropriate settings and restrictions requires minimal manual intervention. Devices and apps can be assigned according to the class groups as desired.



Apple Device Enrolment Program (DEP*): Device Registration

The Apple Device Enrolment Program (DEP) helps educational institutions easily deploy and configure Apple products by automating enrolment and supervision into MDM.

DEP provides companies with a quick and streamlined way to deploy their organisation's iPads, iPhones, Mac computers, and Apple TVs.



Apple Volume Purchase Program (VPP*): Distributes Apps in Large Numbers

The Volume Purchase Program allows educational institutions to buy apps in large numbers and distribute them within their organisation.

ZuluDesk works closely with Apple to seamlessly integrate the VPP portal with the ZuluDesk Management System (ZMS).

*The use of DEP and VPP always requires the use of the Apple School Manager.

ZuluDesk Licensing: Constant and transparent

ZuluDesk has endeavoured to keep their licensing structure concise. There are no hidden pricing incursions for updates or new releases, making ZuluDesk a reliable MDM solution for schools.

1-YEAR-LICENSE

\$9.90

price inc GST

Each managed device requires a license. This license is transferable if a device needs to be replaced.

PERPETUAL LICENSE

\$39.60

price inc GST

The license is bound to a serial number and is valid as long as the device is in use. This license can not be transferred.



Complete package

A license provides access to ZuluDesk Teacher, ZuluDesk Parent, ZuluDesk Management System and all future features and updates.



100 % Education

ZuluDesk is fully focused on education. This experience is reflected in all tools and functions. ZuluDesk knows what matters.



Local help desk

First-class support and customer service play a big role. Our friendly support team based in Perth, Australia will help you quickly and competently with every problem.



ZuluDesk cloud

ZuluDesk is cloud-based. Thus, new features, updates and apps are automatically available.





Do you have questions or need support?
Please contact our Australian distributor.



Solutions IT
www.solutionsit.com.au
sales@solutionsit.com.au



ZULUDESK

www.zuludesk.com

ZuluDesk BV, Hoenderkamp 23, 7812 VZ, Emmen, Netherlands
ZuluDesk Inc., 11801 Domain Blvd, 3rd floor, Austin, TX 78758, United States